

## EAR TAGS & MICROCHIPS

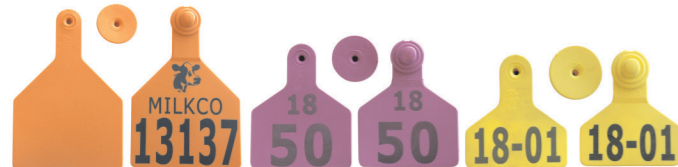
- The no snag tag
- Very easy and safe to apply
- The flexible material of the male tag aids higher retention
- Innovative design with exceptional quality
- 8 colours available
- Custom laser print



### SHEEP, GOATS AND SMALL GAME



### CATTLE AND LARGE GAME



### MICROCHIPS



- Supplied ready for use; programmed with a unique number, supplied in a sterile package with a one-time use syringe and six barcode labels
- ISO 11784/11785 standard and ICAR approved

## DATA RECORDING MADE EASY

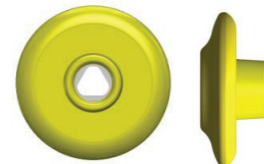
### XRS2 STICK READER



### MODERNIZE YOUR SHEEP MANAGEMENT RECORD-KEEPING

- Quick, easy and accurate reading
- Transfer records via USB or Bluetooth
- Process tasks such as registration, mating, pregnancy, scanning, mothering-up, vaccinations, performance data, etc. fully integrated with BenguFarm
- Programming can be done to compliment the farmer's existing process

### ELECTRONIC EAR TAGS (RFID)



ROUND ELECTRONIC TAG  
30mm FDX-B

- Identify each animal's unique characteristics
- ISO standard and ICAR approved
- Effective animal registration
- RFID-25mm FDX Electronic Identification for smaller animals
- RFID-30mm FDX & HDX Identification for large animals

FARMEX is a start-up founded in 2022 by  
FEEDER ANIMAL FEED TRADING L.L.C.

Our focus is bringing comfort to animals in  
livestock farms. To achieve this, we established  
a milking goat and Sheep farm with Murciana  
goats and Asaf sheep in AL FAQA, Dubai.  
This dairy goat and sheep farm is designed to be  
a Show-farm for all animal lovers in UAE to visit  
and share their knowledge with us as we want to  
share with them what we learn every day about  
livestock farming in UAE.

**FARMEX**

+971 56 267 5158

Office no 805, Al Saud Building,  
Amman Street, Dubai, UAE  
P.O.Box 122703

[www.farmex.ae](http://www.farmex.ae)

PRODUCT SUPPLIED BY



ACCURATE LIVESTOCK MANAGEMENT

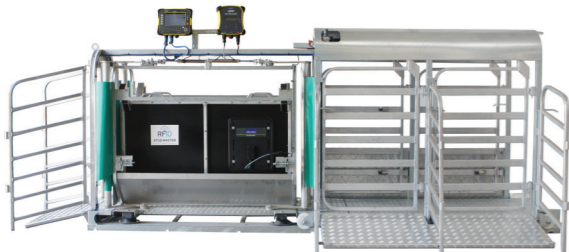
**FARMEX**

[www.farmex.ae](http://www.farmex.ae)



**SHEEP AND CATTLE  
MANAGEMENT**

# RFID EXPERTS SHEEP AUTO DRAFTER



## FULLY AUTOMATED SHEEP DRAFTER

The Stud Master allows for fully automated weighing, drafting and record keeping. Sheep easily flow through the system, which enables the farmer to individually weigh and draft more than 500 animals per hour.

All individual animal records can be transferred electronically directly to Management Software which creates a paperless environment, eliminate mistakes and increase efficiency.

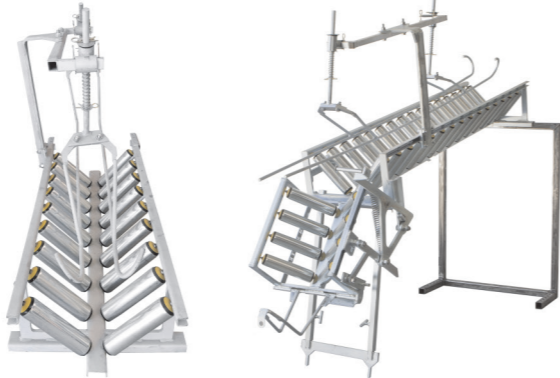
- Accurate hands free weighing and drafting
- Fully integrated with the Tru-Test XR5000
- Electronic data transfer to and from BenguFarm and Feedlot Management Software
- Drafting according to multiple criteria e.g. weight, sex, dame, sire, breed, DOB, etc.
- Up to 5-way drafting
- Towable version available for easy transportation
- Increase efficiency and reduce the cost of labour

 **USER-FRIENDLY SYSTEMS**

 **ON-SITE INSTALLATION & TRAINING**

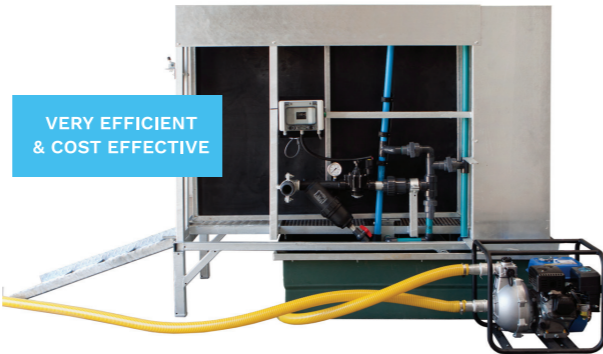
 **TELEPHONIC AND ONLINE ASSISTANCE VIA TEAMVIEWER**

# LAMB MASTER, SHEEP & GOAT DIP



The Lamb Master is the perfect machine for earmarking, tagging, tail docking, vaccinating, castrating, and drenching lambs. Lambs are released on their feet, minimising the risk of injury. The V-shaped chute allows you to handle your lambs fast with minimal effort.

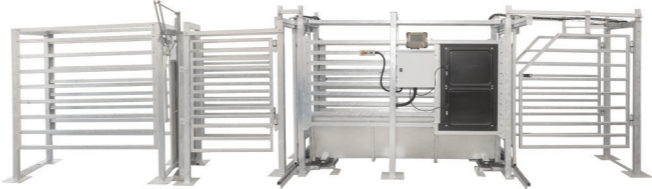
## MOBILE SHEEP DIP



VERY EFFICIENT  
& COST EFFECTIVE

- Can be used as a foot dip or full dip
- With 15 high pressure jets covering the top, sides and underneath you get exact coverage of the sheep for maximum results
- Also available in a mobile version

# CATTLE SCALES

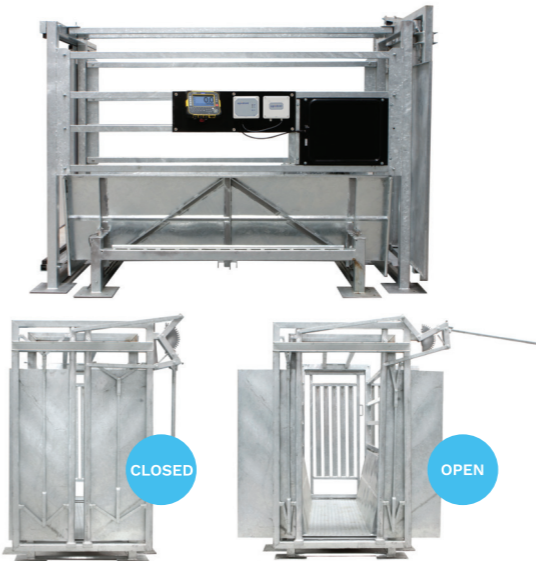


AUTOMATED CATTLE SCALE WITH SLIDING GATES

## RFID EXPERTS CATTLE SCALE

- Fast, accurate recording of individual weight and other date
- Electronic data transfer saves time and improve accuracy
- Galvanised rugged design and built to last
- Unique weighing plate designs for consistent accurate weight recordings
- Additional features such as drafting, working gate modules, lead-up race, etc also available
- Drafting according to multiple criteria e.g. weight, sex, dame, sire, breed, DOB, etc.

## MANUAL CATTLE SCALE WITH H-CLAMP

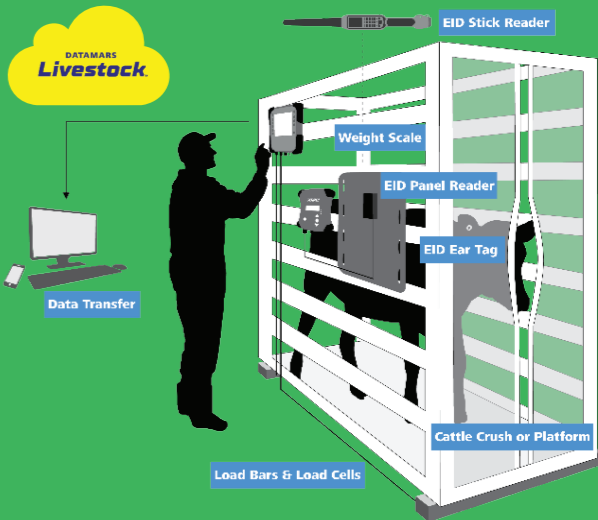


# MANAGEMENT SOFTWARE

## DATAMARS LIVESTOCK MANAGEMENT

- Web based
- Electronic data capturing in the field with the APR500
- Electronic data transfer eliminate mistakes and increase accuracy
- Powerful search function
- Animals can be flexibly grouped either by Breed/Sub-breed or Group/Camp/Herd
- Easy import of contact details (VETS, breeders, buyers, sellers) via CSV files

## CLOUD DATA SHARING - 3RD PARTY PLATFORM



## DATALINK APP

